



ENTRANOSA WATER NEWS

Committed to Providing Safe, Clean Water to All Our Members Since 1981



December

A MONTHLY PUBLICATION
FROM YOUR WATER AND WASTEWATER ASSOCIATION

2021

Merry Christmas to All!

Have a Happy & Prosperous New Year!

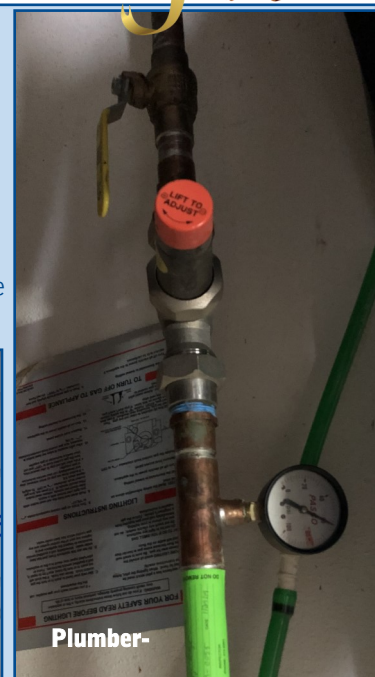
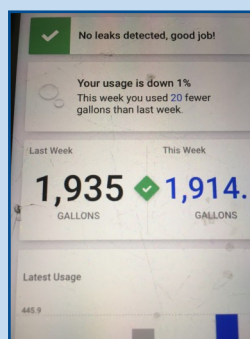
A cautionary winter tale:

Suppose you didn't install a home pressure reducing valve (PRV) or check the water pressures at the hose bibb. Suppose you went away on vacation only to return to find your house flooded from a high-pressure water leak. While Entranosa does its best, it is impossible for our staff to keep track of water pressures for 3,600 meters. That's why we ask our members to install a universal plumbing code home PRV. If members cannot afford the installation costs, please check your water pressures monthly at a hose bibb. Please contact Entranosa if your pressure exceeds 80 psi! We have just received a new shipment of hose bibb pressure gauges which members can purchase at the Entranosa office for \$10. If members want to leave for vacation and have

not yet installed a home PRV or checked the pressures at the hose bibb, Entranosa will turn members' water off and back on at no cost when members return. At right is an upgraded cell meter that notifies you of any leaks. These are all simple steps to avoid a cold-weather disaster and to keep Entranosa's costs low. Our average monthly water bill is \$56.



\$10 is a bargain for peace of mind



Increasing Capacity

Entranosa recently added a third pump to our existing Booster Station on Frost Road. This will increase pumping capacity in the future. Increased capacity isn't so important in the winter months, but it's crucial during the spring and summer when demand is greatest.



Holiday Hours Entranosa will be closed on **Thurs. Dec. 23, 2021** and **Dec. 24** and will reopen on **Monday Dec. 27, 2021**. We will also be closed **Monday Jan. 3** and reopen on **Tuesday Jan. 4, 2022**.



Entranosa Water & Wastewater Association
Office: (505) 281-8700
Emergency: (505) 604-5935 www.entranosawater.com
Office Hours:
Monday 9:00 am – 4:30 pm
Tuesday – Friday 8:00 am – 4:30 pm
Entranosa is an equal-opportunity employer.

- ◇ **Reliably supply quality drinking water at a reasonable price to our membership, such that the Association is self-sustaining**
- ◇ **Promote water conservation**
- ◇ **Provide leadership for our Community concerning water and wastewater issues**
- ◇ **Protect our ground water resources through environmentally responsible business practices**
- ◇ **Pursue water & wastewater service opportunities in the East Mountain and Estancia Basin Regions**

**ENTRANOSA'S
MISSION
STATEMENT**



ENTRANOSA WATER NEWS

*Committed to Providing Safe, Clean Water to All Our Members
Celebrating 40 Years of Service*



Water Hardness Reading as of 11/29/21: 28 grains

Average Water Usage: Nov.: 6,056 gallons; Oct.: 8,953 gallons

Don't Use Galvanized Steel for Plumbing

Entranosa continues to have problems with plumbing contractors from Albuquerque who aren't familiar working with hard-water plumbing. If members are doing major yard line work that involves connection to Entranosa's meter can, please contact Entranosa for help. The picture below is of an illegal connection using a galvanized steel elbow and is considered tampering with Entranosa's meter can. Per the Association's policy, the member is responsible for their contractor and will be fined \$250 plus the cost of repairs. This member was lucky that Entranosa crews caught this use of galvanized steel before the plumber finished, as connection fitting would have failed within one to two years. Galvanized steel is coated inside with zinc carbonate which wears off in a few years. This allows hard or softened water — especially hot water — to corrode the galvanized steel coupling, leading to leaks, rusty colored or bad-tasting water.



Congratulations Art!

Congratulations to Art Garcia for passing his Level 2 water supply operator. In New Mexico, an operator with a Level 2 certificate can legally operate a water system. With this certificate and his

knowledge of the Entranosa System, Art was promoted to Foreman status.



Art Garcia joined Entranosa in June

Adding Wells for Future Use

Entranosa has entered into an

agreement to purchase two more agricultural wells 5 miles west of Stanley. As part of the due diligence process, the wells need to be inspected, cleaned and test pumped to determine the useful life of each well. The old agricultural well pumps need to be pulled for inspection, photos included is the well



being pulled and a video inspection showing the static

level of 192 ft and bottom of the well at 478.5 ft. To complicate matters for the well puller, this well had a large bee hive inside which made it tricky. The picture left shows some of the bee hive that is floating on top.

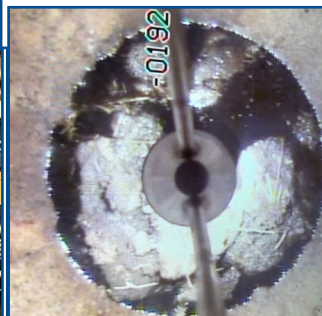


Photo inside the well shows the hive as white



Photo inside well shows the bottom at 478.5 feet



Entranosa's Board of Directors

Chair : Linda Barbour **Secretary:** Rik Thompson **Treasurer:** Dennis Hodges **Members:** CJ "Skip" Mead, Paul Gorder, Robert 'Rob' Baracker, Joelle Hertel

Office 505-281-8700

www.entranosawater.com

Emergency 505-604-5935